

Chem-Impex International, Inc.

Tel: (630) 766-2112

E-mail: sales@chemimpex.com

Shipping and Correspondence:

935 Dillon Drive

Wood Dale, IL 60191

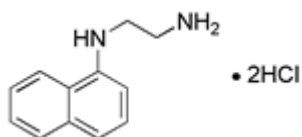
Fax: (630) 766-2218

Web site: www.chemimpex.com

Manufacturing site:

825 Dillon Drive

Wood Dale, IL 60191



Product Specifications

| | |
|--------------------------|--|
| Catalogue Number | 00222 |
| Product | <i>N</i>-(1-Naphthyl)ethylenediamine NED•2HCl 2-(1-Naphthylamino)ethylamine dihydrochloride |
| CAS Number | 1465-25-4 |
| Molecular Formula | C ₁₂ H ₁₄ N ₂ •2HCl |
| Molecular Weight | 259.18 |

| | |
|------------------------------------|---|
| Appearance | White to light pink to beige powder or crystals. |
| Solubility | Slightly soluble in cold water and readily soluble in hot water |
| Water Content (Karl Fisher) | ≤ 5% |
| Sensitivity | To Sulfanilamide : Passes test |
| Assay by titration | ≥ 98% (Dry basis) |
| Grade | ACS reagent |
| Storage | Store at RT |

For Laboratory Use Only