

Chem-Impex International, Inc.

Tel: (630) 766-2112

E-mail: sales@chemimpex.com

Shipping and Correspondence:

935 Dillon Drive

Wood Dale, IL 60191

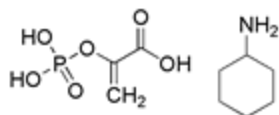
Fax: (630) 766-2218

Web site: www.chemimpex.com

Manufacturing site:

825 Dillon Drive

Wood Dale, IL 60191



Product Specifications

Catalogue Number 00241

Product

**Phospho(enol)pyruvic acid
cyclohexylammonium salt**

2-(Phosphonooxy)-2-propenoic acid monocyclohexylammonium salt

CAS Number 10526-80-4

Molecular Formula C₃H₄O₆P•C₆H₁₄N

Molecular Weight 267.2

Appearance White to off-white crystalline powder

Solubility Colorless solution (5% in water)

Solubility (Turbidity) ≤ 2.0% NTU (0.5% in water)

**Water Content (Karl
Fisher)** ≤ 3.0%

Infrared Spectrum Conforms to structure

Related Substances Inorganic Phosphorus: ≤ 0.2%
Impurity (pyruvate content, UV): ≤ 0.05%

Assay 97 - 103% (Enzymatic)

Assay by titration 99 - 101% (Perchloric Acid)

Application Phospho(enol)pyruvic acid (PEP) is involved in glycolysis and gluconeogenesis. In glycolysis, PEP is metabolized by pyruvate kinase to yield pyruvate.

Storage Store at ≤ -4 °C

For Laboratory Use Only