

Chem-Impex International, Inc.

Tel: (630) 766-2112

E-mail: sales@chemimpex.com

Shipping and Correspondence:

935 Dillon Drive

Wood Dale, IL 60191

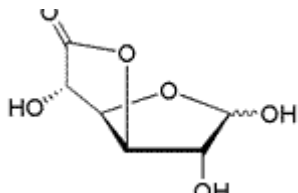
Fax: (630) 766-2218

Web site: www.chemimpex.com

Manufacturing site:

825 Dillon Drive

Wood Dale, IL 60191



Product Specifications

Catalogue Number 01453
Product **D-(+)-Glucuronic acid γ -lactone**

D-(+)-Glucurono-6,3-lactone

Glucuronolactone

CAS Number 32449-92-6

Molecular Formula C₆H₈O₆

Molecular Weight 176.12

Appearance White crystalline powder
Solubility Clear and colorless solution.
Melting Point 171.0-180.0 °C
Heavy Metals ≤ 50 ppm
Optical Rotation [α]_D = +18 to +20°
Infrared Spectrum Conforms to reference
Loss on Drying ≤ 0.5%
Residue On Ignition ≤ 0.1%
Purity by HPLC ≥ 99%
Storage Store at RT
Additional Information Identification: To pass test

For Laboratory Use Only