

# Chem-Impex International, Inc.

---

Tel: (630) 766-2112

E-mail: sales@chemimpex.com

Shipping and Correspondence:

935 Dillon Drive

Wood Dale, IL 60191

Fax: (630) 766-2218

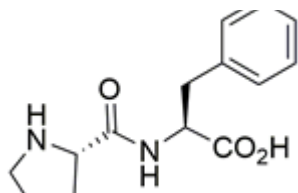
Web site: www.chemimpex.com

Manufacturing site:

825 Dillon Drive

Wood Dale, IL 60191

---



## Product Specifications

Catalogue Number	04626
Product	<b>H-Pro-Phe-OH</b>
CAS Number	13589-02-1
Molecular Formula	C <sub>14</sub> H <sub>18</sub> N <sub>2</sub> O <sub>3</sub>
Molecular Weight	262.31

---

Appearance	White powder
Analysis by Mass Spectra	Conforms to standard
<sup>1</sup> H NMR	Conforms to structure
Purity by HPLC	≥ 99%
Storage	Store at 0 - 8 °C

**For Laboratory Use Only**