

# Chem-Impex International, Inc.

---

**Tel:** (630) 766-2112

**E-mail:** sales@chemimpex.com

**Shipping and Correspondence:**

935 Dillon Drive

Wood Dale, IL 60191

**Fax:** (630) 766-2218

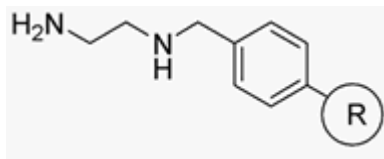
**Web site:** www.chemimpex.com

**Manufacturing site:**

825 Dillon Drive

Wood Dale, IL 60191

---



## Product Specifications

<b>Catalogue Number</b>	05063
<b>Product</b>	<b><i>N</i>-(2-Aminoethyl)aminomethyl polystyrene resin (0.5-2.5 mmol/g, 200-400 mesh)</b>

---

<b>Appearance</b>	Yellow beads
<b>Loss on Drying</b>	≤ 4%
<b>Bead Size</b>	200 - 400 mesh
<b>Substitution (meq/g)</b>	0.5-2.5 mmol/g
<b>% DVB</b>	1% DVB
<b>Storage</b>	Store at 0 - 8 °C

**For Laboratory Use Only**