

Chem-Impex International, Inc.

Tel: (630) 766-2112

E-mail: sales@chemimpex.com

Shipping and Correspondence:

935 Dillon Drive

Wood Dale, IL 60191

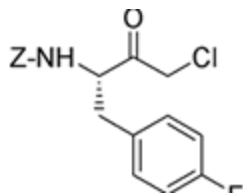
Fax: (630) 766-2218

Web site: www.chemimpex.com

Manufacturing site:

825 Dillon Drive

Wood Dale, IL 60191



Product Specifications

Catalogue Number	06546
Product	Z-4-fluoro-L-phenylalanine chloromethylketone Z-4-fluoro-L-phenylalanine chloromethylketone Z-p-fluoro-Phe-CMK
CAS Number	400771-48-4
Molecular Formula	C ₁₈ H ₁₇ NO ₃ ClF
Molecular Weight	349.75
Appearance	White powder
Appearance of Solution	clear colorless solution (25mg/mL in Chloroform/Methanol 1:1)
Elemental Analysis (Theory)	C = 61.81%; H = 4.90%; N = 4.00%
Elemental Analysis (Found)	C = 61.70 ± 0.5%; H = 4.88 ± 0.5%; N = 3.92 ± 0.5%
TLC System	Chloroform/Ethylacetate (9:1) Ethylacetate/Hexane (4:5) Benzene/Dioxane/Acetic acid (95:25:4) Plate: Silica gel 60 F ₂₅₄ Detected by: UV, ninhydrin, chlorine-tolidine
Purity by TLC	≥ 99%
Storage	Store at 0-8 °C

For Laboratory Use Only