

Chem-Impex International, Inc.

Tel: (630) 766-2112

E-mail: sales@chemimpex.com

Shipping and Correspondence:

935 Dillon Drive

Wood Dale, IL 60191

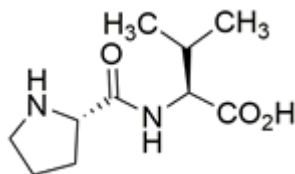
Fax: (630) 766-2218

Web site: www.chemimpex.com

Manufacturing site:

825 Dillon Drive

Wood Dale, IL 60191



Product Specifications

Catalogue Number	09095
Product	Pro-Val-OH L-Prolyl-L-valine
CAS Number	52899-09-9
Molecular Formula	C ₁₀ H ₁₈ N ₂ O ₃
Molecular Weight	214.26

Appearance	White crystalline powder
Solubility	Clear colorless solution (50 mg/mL in 80% AcOH)
Elemental Analysis (Theory)	C : 51.71%, H : 8.68%, N : 12.06% calc. as 1 H ₂ O (7.8%)
Water Content (Karl Fisher)	≤ 10%
TLC System	N-Butanol/Acetic acid/Water 4/2/2 Isopropanol/Ammonia comc. 1/1 Plate : Silicagel 60 f254 Detected by : UV, Ninhydrin, TMB
Optical Rotation	[α] _D ²⁴ = -63 ± 3 ° (C= 1.5% in water)
Purity by TLC	≥ 99%
Storage	Store at ≤ -4°C

For Laboratory Use Only