

Chem-Impex International, Inc.

Tel: (630) 766-2112

E-mail: sales@chemimpex.com

Shipping and Correspondence:

935 Dillon Drive

Wood Dale, IL 60191

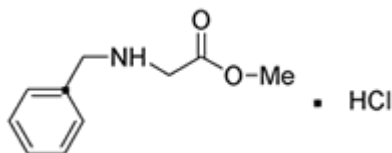
Fax: (630) 766-2218

Web site: www.chemimpex.com

Manufacturing site:

825 Dillon Drive

Wood Dale, IL 60191



Product Specifications

Catalogue Number	11912
Product	Benzyl glycine methyl ester hydrochloride
	Bzl-Gly-OMe•HCl
CAS Number	17136-35-5
Molecular Formula	C ₁₀ H ₁₂ NO ₂ •HCl
Molecular Weight	214.71
<hr/>	
Appearance	White crystalline powder
Melting Point	133-140 °C
Assay by titration	≥ 98%
Purity by HPLC	≥ 99%
Purity by TLC	≥ 99%
Storage	Store at 0-8 °C

For Laboratory Use Only