

Chem-Impex International, Inc.

Tel: (630) 766-2112

E-mail: sales@chemimpex.com

Shipping and Correspondence:

935 Dillon Drive

Wood Dale, IL 60191

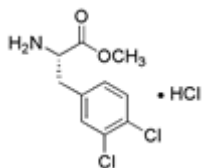
Fax: (630) 766-2218

Web site: www.chemimpex.com

Manufacturing site:

825 Dillon Drive

Wood Dale, IL 60191



Product Specifications

Catalogue Number	14254
Product	L-3,4-Dichlorophenylalanine methyl ester hydrochloride L-Phe(3,4-DiCl)-OMe•HCl
CAS Number	173522-95-7
Molecular Formula	C ₁₀ H ₁₁ NO ₂ Cl ₂ ·HCl
Molecular Weight	284.7
<hr/>	
Appearance	Off-white powder
Melting Point	167-169 °C
Optical Rotation	[α] _D ²⁰ = + 16 ± 1° (C=1 in MeOH)
Purity by HPLC	≥ 99%
Storage	Store at 0-8°C

For Laboratory Use Only