

Chem-Impex International, Inc.

Tel: (630) 766-2112

E-mail: sales@chemimpex.com

Shipping and Correspondence:

935 Dillon Drive

Wood Dale, IL 60191

Fax: (630) 766-2218

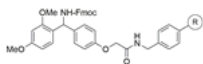
Web site: www.chemimpex.com

Manufacturing site:

825 Dillon Drive

Wood Dale, IL 60191

Product Specifications



Catalogue Number	14818
Product	Fmoc-2,4-dimethoxy-4'-(carboxymethoxy)- Fmoc rink amide aminomethyl resin

Appearance	Pale white or slight yellow beads
Swelling in DCM	4.5 - 8.5 mL/g
Swelling in DMF	4 - 7 mL/g
Kaiser Test	Negative
Infrared Spectrum	Conforms to structure
Loss on Drying	≤ 2% (40 ± 1 °C in vacuum oven, 1 mmHg pressure, 5h)
Mesh Size	200 - 400 mesh
Substitution (meq/g)	0.6 - 1.0 meq/g
% DVB	1% DVB
Storage	Store at 0 - 8 °C

For Laboratory Use Only