

Chem-Impex International, Inc.

Tel: (630) 766-2112

E-mail: sales@chemimpex.com

Shipping and Correspondence:

935 Dillon Drive

Wood Dale, IL 60191

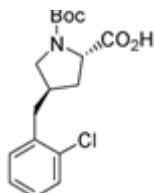
Fax: (630) 766-2218

Web site: www.chemimpex.com

Manufacturing site:

825 Dillon Drive

Wood Dale, IL 60191



Product Specifications

Catalogue Number	15900
Product	Boc-(R)-γ-(2-chlorobenzyl)-L-proline
CAS Number	959581-51-2
Molecular Formula	C ₁₇ H ₂₂ ClNO ₄
Molecular Weight	339.82

Appearance	White to off-white powder
Optical Rotation	[α] _D ²⁰ = -64 to -58° (C=1 in DCM)
Analysis by Mass Spectra	Conforms to standard
¹ H NMR	Conforms to structure
Purity by HPLC	≥ 98%
Storage	Store at 0 - 8 °C

For Laboratory Use Only