

# Chem-Impex International, Inc.

---

**Tel:** (630) 766-2112

**E-mail:** sales@chemimpex.com

**Shipping and Correspondence:**

935 Dillon Drive

Wood Dale, IL 60191

**Fax:** (630) 766-2218

**Web site:** www.chemimpex.com

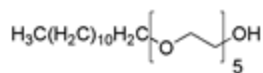
**Manufacturing site:**

825 Dillon Drive

Wood Dale, IL 60191

---

## Product Specifications



**Catalogue Number** 16401

**Product** **n-Dodecylpentaoxyethylene**

C12E5

Polyoxyethylene 5 lauryl ether

**CAS Number** 3055-95-6

**Molecular Formula** C<sub>22</sub>H<sub>46</sub>O<sub>6</sub>

**Molecular Weight** 406.6

---

**Appearance** Wax, oil like substance at room temp

**Solubility** Clear colorless solution ( 50 mg/mL in ethylacetate)

**Assay** ≥ 99% (Elemental Analysis based on Carbon content)

**Purity by GC** ≥ 99%

**ESI-MS** M = 405 ± 2u (Average mass)

**Storage** Store at ≤ -4 °C

**For Laboratory Use Only**