

Chem-Impex International, Inc.

Tel: (630) 766-2112

E-mail: sales@chemimpex.com

Shipping and Correspondence:

935 Dillon Drive

Wood Dale, IL 60191

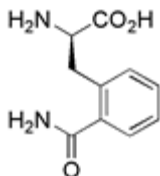
Fax: (630) 766-2218

Web site: www.chemimpex.com

Manufacturing site:

825 Dillon Drive

Wood Dale, IL 60191



Product Specifications

Catalogue Number	16773
Product	D-2-Carbamoylphenylalanine (2 <i>R</i>)-2-Amino-3-(2-carbamoylphenyl)propanoic acid
CAS Number	1217613-52-9
Molecular Formula	C ₁₀ H ₁₂ N ₂ O ₃
Molecular Weight	208.21
Appearance	Almost white powder
Optical Rotation	[α] ²⁵ _D = 30 ± 1 ° (C=1 in water)
Related Substances	Total impurities : ≤ 1%
Assay by titration	≥ 99% (on dried basis)
Storage	Store at 0 - 8 °C

For Laboratory Use Only