

Chem-Impex International, Inc.

Tel: (630) 766-2112

E-mail: sales@chemimpex.com

Shipping and Correspondence:

935 Dillon Drive

Wood Dale, IL 60191

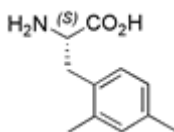
Fax: (630) 766-2218

Web site: www.chemimpex.com

Manufacturing site:

825 Dillon Drive

Wood Dale, IL 60191



Product Specifications

Catalogue Number	16805
Product	L-2,4-Dimethylphenylalanine L-Phe(2,4-DiCH ₃)-OH (S)-2-Amino-3-(2,4-dimethylphenyl)propionic acid
CAS Number	259726-56-2
Molecular Formula	C ₁₁ H ₁₅ NO ₂
Molecular Weight	193.24
<hr/>	
Appearance	White solid
Melting Point	273-279 °C
TLC System	Butanol/Acetic acid/Water (4:1:2) Single spot Chloroform/Methanol/Benzene/Water (8:8:8:1) Single spot Visualized with: UV/Iodine
Optical Rotation	[α] _D ²⁵ = +14 ± 2° (C=1 in 0.5N NaOH)
Purity by HPLC	≥ 99%
Storage	Store at 0-8 °C

For Laboratory Use Only