

# Chem-Impex International, Inc.

---

**Tel:** (630) 766-2112

**E-mail:** sales@chemimpex.com

**Shipping and Correspondence:**

935 Dillon Drive

Wood Dale, IL 60191

**Fax:** (630) 766-2218

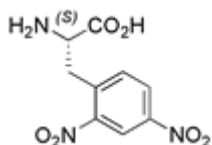
**Web site:** www.chemimpex.com

**Manufacturing site:**

825 Dillon Drive

Wood Dale, IL 60191

---



## Product Specifications

<b>Catalogue Number</b>	16811
<b>Product</b>	<b>L-2,4-Dinitrophenylalanine</b> L-Phe(2,4-DiNO <sub>2</sub> )-OH (S)-2-Amino-3-(2,4-dinitrophenyl)propionic acid
<b>CAS Number</b>	49607-21-8
<b>Molecular Formula</b>	C <sub>9</sub> H <sub>9</sub> N <sub>3</sub> O <sub>6</sub>
<b>Molecular Weight</b>	255.18

---

<b>Appearance</b>	Yellowish to brown powder
<b>Melting Point</b>	> 300 °C
<b>TLC System</b>	Butanol/Acetic acid/ Water (4:1:2) Single spot Chloroform/Methanol/Benzene/Water (8:8:8:1) Single spot Visualized with UV/Iodine
<b>Optical Rotation</b>	[α] <sub>D</sub> <sup>25</sup> = 38 ± 1 ° (C=1 in 1N HCl)
<b>Purity by HPLC</b>	≥ 99%
<b>Storage</b>	Store at 0 - 8 °C

**For Laboratory Use Only**