

Chem-Impex International, Inc.

Tel: (630) 766-2112

E-mail: sales@chemimpex.com

Shipping and Correspondence:

935 Dillon Drive

Wood Dale, IL 60191

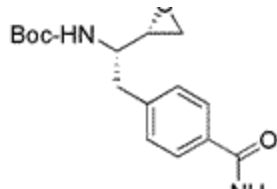
Fax: (630) 766-2218

Web site: www.chemimpex.com

Manufacturing site:

825 Dillon Drive

Wood Dale, IL 60191



Product Specifications

Catalogue Number	16821
Product	<i>erythro-N-Boc-L-4-carbamoylphenylalanine</i>
Molecular Formula	C ₁₆ H ₂₂ N ₂ O ₄
Molecular Weight	306.36

Appearance	White powder
TLC System	Chloroform/Methanol/Acetic acid (90:8:2) Single spot Chloroform/Methanol/Benzene/Water (8:8:8:1) Single spot Visualized with UV/Iodine
Optical Rotation	[α] _D ²⁵ = -32 ± 2° (C=1 in DMF)
Purity by HPLC	≥ 98%
Storage	Store at 0-8 °C

For Laboratory Use Only