

Chem-Impex International, Inc.

Tel: (630) 766-2112

E-mail: sales@chemimpex.com

Shipping and Correspondence:

935 Dillon Drive

Wood Dale, IL 60191

Fax: (630) 766-2218

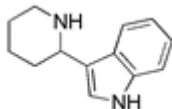
Web site: www.chemimpex.com

Manufacturing site:

825 Dillon Drive

Wood Dale, IL 60191

Product Specifications



Catalogue Number	17469
Product	3-Piperidin-2-yl-1H-indole
	3-(2-Piperidinyl)-1H-indole
CAS Number	4695-73-2
Molecular Formula	C ₁₃ H ₁₆ N ₂
Molecular Weight	200.28

Appearance	Colorless to yellow powder
¹H NMR	Conforms to structure
Purity	≥ 95% (NMR)
Storage	Store at 0-8°C

For Laboratory Use Only