

# Chem-Impex International, Inc.

**Tel:** (630) 766-2112

**E-mail:** sales@chemimpex.com

**Shipping and Correspondence:**

935 Dillon Drive

Wood Dale, IL 60191

**Fax:** (630) 766-2218

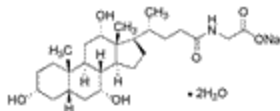
**Web site:** www.chemimpex.com

**Manufacturing site:**

825 Dillon Drive

Wood Dale, IL 60191

## Product Specifications



**Catalogue Number** 20883

**Product** **Glycocholic acid sodium salt hydrate**

*N*-Cholyglycine sodium salt hydrate

Sodium glycocholate hydrate

**CAS Number** 207614-05-9

**Molecular Formula** C<sub>26</sub>H<sub>42</sub>NO<sub>6</sub>•Na•2H<sub>2</sub>O

**Molecular Weight** 523.64

**Appearance** White to off-white crystalline powder

**Heavy Metals** ≤ 20 ppm

**Water Content (Karl Fisher)** ≤ 8%

**Optical Rotation** [α]<sub>D</sub><sup>20</sup> = +29.0 to +35.0° (C=1 in H<sub>2</sub>O)

**Infrared Spectrum** Conforms to structure

**Residual Solvents**  
Ethanol: ≤ 0.5%  
Ethylacetate: ≤ 0.1%

**Related Substances**  
Cholic acid sodium salt: ≤ 1.0%  
Glycodeoxycholic acid sodium salt: ≤ 0.5%  
Ethylgeocholate: ≤ 0.3%  
Ethylglycodeoxycholate: ≤ 0.2%  
Ethylcholate: ≤ 0.5%  
Other unidentified related substances each: ≤ 0.5%  
Total sum of related substances: ≤ 1.5% (HPLC)

**Purity by HPLC** ≥ 99% (Dry basis)

**Storage** Store at 0-8 °C

# ***Product Specifications***

**Catalog Number: 20883**

---

**For Laboratory Use Only**