

Chem-Impex International, Inc.

Tel: (630) 766-2112

E-mail: sales@chemimpex.com

Shipping and Correspondence:

935 Dillon Drive

Wood Dale, IL 60191

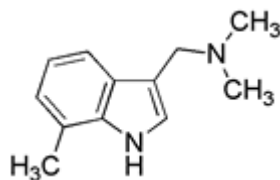
Fax: (630) 766-2218

Web site: www.chemimpex.com

Manufacturing site:

825 Dillon Drive

Wood Dale, IL 60191



Product Specifications

Catalogue Number 21329

Product **7-Methylgramine**

3-(Dimethylaminomethyl)-7-methylindole

CAS Number 13712-78-2

Molecular Formula C₁₂H₁₆N₂

Molecular Weight 188.27

Appearance White to off-white crystalline powder

Infrared Spectrum Conforms to structure

Loss on Drying ≤ 0.5%

Residue On Ignition ≤ 0.5%

¹H NMR Conforms to structure

Purity by HPLC ≥ 98%

Storage Store at 0-8°C

For Laboratory Use Only