

Chem-Impex International, Inc.

Tel: (630) 766-2112

E-mail: sales@chemimpex.com

Shipping and Correspondence:

935 Dillon Drive

Wood Dale, IL 60191

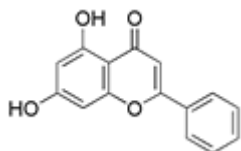
Fax: (630) 766-2218

Web site: www.chemimpex.com

Manufacturing site:

825 Dillon Drive

Wood Dale, IL 60191



Product Specifications

Catalogue Number 21891

Product **Chrysin**

5,7-Dihydroxyflavone

5,7-Dihydroxy-2-phenyl-chromen-4-one

CAS Number 480-40-0

Molecular Formula C₁₅H₁₀O₄

Molecular Weight 254.24

Appearance Fine, light yellow powder

Solubility Partly soluble in hydro-alcoholic solution

Heavy Metals ≤ 10 ppm

Sulfur Compounds Sulfate: ≤ 0.5%

Anion Chloride (Cl⁻): ≤ 1 ppm
Sulfate (SO₄²⁻): 0.5%

Cation Cadmium (Cd): ≤ 1 ppm
Lead (Pb): ≤ 1 ppm

Yeast and Mold ≤ 50 cfu/g

Insoluble ≤ 10 ppm (in Ethanol)

Loss on Drying ≤ 0.5%

Residual Solvents Ethanol: ≤ 0.2%

E. Coli, Salmonella, S.Aureus Absent

Staphylococcus Aureus Negative

Mesh Size 100% pass through 80 mesh

Ash ≤ 0.5%

Purity by HPLC ≥ 98%

Product Specifications

Catalog Number: 21891

Purity by TLC	≥ 98%
Storage	Store at 0-8 °C
Additional Information	Sterilization Method: High temperature and high pressure for short time (5"-10")(Free from Gamma irradiation) Phosphate Organics: ≤ 1 ppm Total plate count: 1000 cfu/g P. aeruginosa: Absent Aflatoxins: ≤ 0.2 ppb

For Laboratory Use Only