

# Chem-Impex International, Inc.

---

Tel: (630) 766-2112

E-mail: sales@chemimpex.com

Shipping and Correspondence:

935 Dillon Drive

Wood Dale, IL 60191

Fax: (630) 766-2218

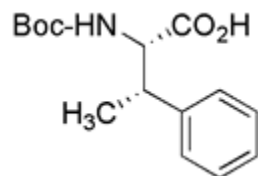
Web site: www.chemimpex.com

Manufacturing site:

825 Dillon Drive

Wood Dale, IL 60191

---



## Product Specifications

Catalogue Number	22641
Product	<b><i>N</i>-Boc-<i>erythro</i>-L-<math>\beta</math>-methylphenylalanine</b>
	(2 <i>S</i> ,3 <i>S</i> )-Boc- $\beta$ -methyl-L-Phe-OH
CAS Number	90731-57-0
Molecular Formula	C <sub>15</sub> H <sub>21</sub> NO <sub>4</sub>
Molecular Weight	279.34
<hr/>	
Appearance	White powder
Melting Point	101-105 °C
Optical Rotation	[ $\alpha$ ] <sub>D</sub> <sup>20</sup> = +23 $\pm$ 2° (C=1 in EtOH)
Analysis by Mass Spectra	M = 279.34 $\pm$ 1
<sup>13</sup> C NMR	Conforms to structure
<sup>1</sup> H NMR	Conforms to structure
Purity by HPLC	$\geq$ 97%
Storage	Store at 0-8 °C

**For Laboratory Use Only**