

# Chem-Impex International, Inc.

---

**Tel:** (630) 766-2112

**E-mail:** sales@chemimpex.com

**Shipping and Correspondence:**

935 Dillon Drive

Wood Dale, IL 60191

**Fax:** (630) 766-2218

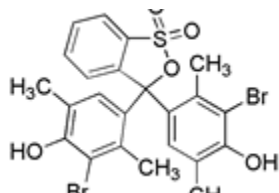
**Web site:** www.chemimpex.com

**Manufacturing site:**

825 Dillon Drive

Wood Dale, IL 60191

---



## Product Specifications

**Catalogue Number** 22825

**Product** **Bromoxylenol Blue**

3',3''-Dibromo-*p*-xylenolsulfonephthalein

**CAS Number** 40070-59-5

**Molecular Formula** C<sub>23</sub>H<sub>20</sub>Br<sub>2</sub>O<sub>5</sub>S

**Molecular Weight** 568.28

---

**Appearance** Light pink to buff powder

**Solubility** Clear yellow to orange to red solution (0.1% in Ethanol)

**UV Ratios** Absorptivity 1%, 1cm.  
(pH 5.7) at  $\lambda_{\max}$ . 453.8 nm: > 300  
(pH 7.4) at  $\lambda_{\max}$ . 614.4 nm: > 500

**Visual Transition Range** pH 5.7 (Yellow) to pH 7.4 (Blue)

**Loss on Drying** ≤ 3%

**Storage** Store at RT

**For Laboratory Use Only**