

# Chem-Impex International, Inc.

---

**Tel:** (630) 766-2112

**E-mail:** sales@chemimpex.com

**Shipping and Correspondence:**

935 Dillon Drive

Wood Dale, IL 60191

**Fax:** (630) 766-2218

**Web site:** www.chemimpex.com

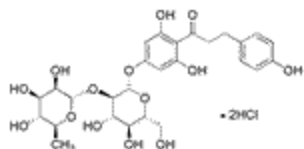
**Manufacturing site:**

825 Dillon Drive

Wood Dale, IL 60191

---

## Product Specifications



**Catalogue Number** 29099

**Product** **Naringin dihydrochalcone**

**Molecular Formula** C<sub>27</sub>H<sub>34</sub>O<sub>14</sub>

**Molecular Weight** 582.55

---

**Appearance** White to off-white crystalline powder

**Heavy Metals** ≤ 10 ppm

**Loss on Drying** ≤ 1.0%

**E. Coli** Negative

**Salmonella** Negative

**Particle Size** 80 mesh = 100%

**Sulfated Ash** ≤ 3.0%

**Purity by HPLC** ≥ 98%

**Application** Used in cosmetic products and as a sweetening agent in food & beverages.

**Storage** Store at 0-8 °C

**Additional Information** Total plate count: < 10000 cfu/g  
Fungi: < 1000 cfu/g

**For Laboratory Use Only**