

Chem-Impex International, Inc.

Tel: (630) 766-2112

E-mail: sales@chemimpex.com

Shipping and Correspondence:

935 Dillon Drive

Wood Dale, IL 60191

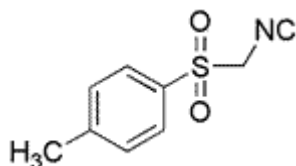
Fax: (630) 766-2218

Web site: www.chemimpex.com

Manufacturing site:

825 Dillon Drive

Wood Dale, IL 60191



Product Specifications

Catalogue Number	31527
Product	<i>p</i>-Toluenesulfonylmethyl isocyanide Tosylmethyl isocyanide (<i>p</i> -Tolylsulfonyl)methyl isocyanide
CAS Number	36635-61-7
Molecular Formula	C ₉ H ₉ NO ₂ S
Molecular Weight	195.24

Appearance	Light brown crystalline powder
Melting Point	109 - 114 °C
Heavy Metals	≤ 20 ppm
Loss on Drying	≤ 0.5%
Residue On Ignition	≤ 0.1%
¹H NMR	Conforms to structure
Purity by HPLC	≥ 99%
Storage	Store at 2 - 8 °C

For Laboratory Use Only