

# Chem-Impex International, Inc.

---

Tel: (630) 766-2112

E-mail: sales@chemimpex.com

Shipping and Correspondence:

935 Dillon Drive

Wood Dale, IL 60191

Fax: (630) 766-2218

Web site: www.chemimpex.com

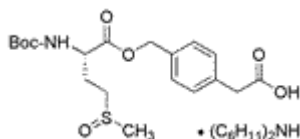
Manufacturing site:

825 Dillon Drive

Wood Dale, IL 60191

---

## Product Specifications



---

Catalogue Number	31688
Product	<b>Boc-L-Met(O)-O-CH<sub>2</sub>-Ph-CH<sub>2</sub>-COOH•DCHA</b>
Molecular Formula	C <sub>19</sub> H <sub>27</sub> NO <sub>7</sub> S•C <sub>12</sub> H <sub>23</sub> N
Molecular Weight	594.81

---

Appearance	White to off-white powder
Melting Point	158-162 °C
Optical Rotation	[α] <sub>D</sub> <sup>20</sup> = - 14 ± 2° (C=1 in EtOH)
Analysis by Mass Spectra	M = 594.8 ± 1
Purity by HPLC	≥ 96.0%
Storage	Store at 0-8 °C

**For Laboratory Use Only**