

# Chem-Impex International, Inc.

---

**Tel:** (630) 766-2112

**E-mail:** sales@chemimpex.com

**Shipping and Correspondence:**

935 Dillon Drive

Wood Dale, IL 60191

**Fax:** (630) 766-2218

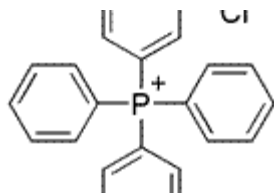
**Web site:** www.chemimpex.com

**Manufacturing site:**

825 Dillon Drive

Wood Dale, IL 60191

---



## Product Specifications

<b>Catalogue Number</b>	32050
<b>Product</b>	<b>Tetraphenylphosphonium chloride</b>
<b>CAS Number</b>	2001-45-8
<b>Molecular Formula</b>	C <sub>24</sub> H <sub>20</sub> ClP
<b>Molecular Weight</b>	374.84

---

<b>Appearance</b>	White to off-white powder
<b>Loss on Drying</b>	≤ 2% at 105 °C
<b>Related Substances</b>	Triphenyl phosphine and Phosphonium oxide (by HPLC) : ≤ 1.0%
<b>Ash</b>	≤ 0.5%
<b>Assay by titration</b>	≥ 98%
<b>Storage</b>	Store at RT

**For Laboratory Use Only**