

Chem-Impex International, Inc.

Tel: (630) 766-2112

E-mail: sales@chemimpex.com

Shipping and Correspondence:

935 Dillon Drive

Wood Dale, IL 60191

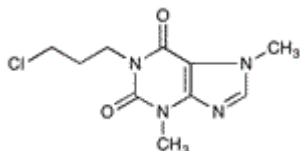
Fax: (630) 766-2218

Web site: www.chemimpex.com

Manufacturing site:

825 Dillon Drive

Wood Dale, IL 60191



Product Specifications

Catalogue Number	32460
Product	1-(3-Chloropropyl)theobromine 1-(3-Chloropropyl)-3,7-dihydro-3,7-dimethyl-1H-purine-2,6-dione 1-(3-Chloropropyl)-3,7-dimethylxanthine
CAS Number	74409-52-2
Molecular Formula	C ₁₀ H ₁₃ ClN ₄ O ₂
Molecular Weight	256.69

Appearance	White to light yellow crystalline powder
Melting Point	144 - 146 °C
Assay by titration	≥ 98%
Purity by HPLC	≥ 98%
Storage	Store at RT

For Laboratory Use Only