

Chem-Impex International, Inc.

Tel: (630) 766-2112

E-mail: sales@chemimpex.com

Shipping and Correspondence:

935 Dillon Drive

Wood Dale, IL 60191

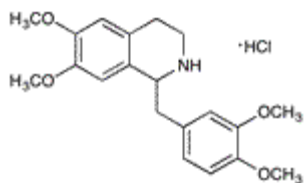
Fax: (630) 766-2218

Web site: www.chemimpex.com

Manufacturing site:

825 Dillon Drive

Wood Dale, IL 60191



Product Specifications

Catalogue Number 32500

Product **Norlaudanosine hydrochloride**

1-(3,4-Dimethoxybenzyl)-6,7-dimethoxy-1,2,3,4-tetrahydroisoquinoline

Tetrahydropapaverine hydrochloride

CAS Number 6429-04-5

Molecular Formula C₂₀H₂₅NO₄•HCl

Appearance White crystalline powder

Melting Point 212 - 218 °C

Loss on Drying ≤ 1.0%

Related Substances Max single impurity : ≤ 1.0%
Total impurities : ≤ 2%

Residue On Ignition ≤ 0.5%

Purity by HPLC ≥ 99%

Storage Store at RT

For Laboratory Use Only