

Chem-Impex International, Inc.

Tel: (630) 766-2112

E-mail: sales@chemimpex.com

Shipping and Correspondence:

935 Dillon Drive

Wood Dale, IL 60191

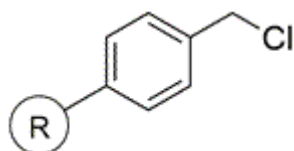
Fax: (630) 766-2218

Web site: www.chemimpex.com

Manufacturing site:

825 Dillon Drive

Wood Dale, IL 60191



Product Specifications

Catalogue Number 33273

Product **Chloromethylated polystyrene**

CAS Number 55844-94-5

Appearance Pale to yellow beads

Infrared Spectrum Conforms to structure

Loss on Drying ≤ 2% (105 ± 3 °C, 1.5 h in oven)

Mesh Size 30 - 70 mesh

Substitution (meq/g) 0.6 - 2.0 mmol/g

% DVB 2% DVB

Storage Store at 0 - 8 °C

For Laboratory Use Only