

# Chem-Impex International, Inc.

**Tel:** (630) 766-2112

**E-mail:** sales@chemimpex.com

**Shipping and Correspondence:**

935 Dillon Drive

Wood Dale, IL 60191

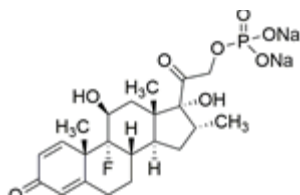
**Fax:** (630) 766-2218

**Web site:** www.chemimpex.com

**Manufacturing site:**

825 Dillon Drive

Wood Dale, IL 60191



## Product Specifications

<b>Catalogue Number</b>	37661
<b>Product</b>	<b>Betamethasone 21-phosphate disodium salt</b>
<b>CAS Number</b>	151-73-5
<b>Molecular Formula</b>	C <sub>22</sub> H <sub>28</sub> FNa <sub>2</sub> O <sub>8</sub> P
<b>Molecular Weight</b>	516.41

<b>Appearance</b>	White or almost white powder, very Hydroscopic!
<b>Appearance of Solution</b>	Clear and colorless solution
<b>Solubility</b>	Freely soluble in water, slightly soluble in ethanol (95%), Practically insoluble in chloroform, in dichloromethane and in ether
<b>Water Content (Karl Fisher)</b>	≤ 8.5%
<b>pH</b>	7.5 - 9.0
<b>Optical Rotation</b>	[α] <sub>D</sub> <sup>20</sup> = +98 to +105 °
<b>UV Ratios</b>	Light absorption : 1.70 - 1.90
<b>Inorganic Impurities</b>	Inorganic Phosphate : ≤ 0.5%
<b>Related Substances</b>	Any secondary impurity : ≤ 2% One such impurity : ≤ 1% Total impurity : ≤ 3% Free betamethasone and other Derivatives : To pass test
<b>Purity by UV</b>	≥ 98%
<b>Grade</b>	EP
<b>Storage</b>	Store at 2 - 8 °C

# ***Product Specifications***

**Catalog Number: 37661**

---

**Additional Information**

Identification :

Test for A : UV ration at 450 nm :  $\leq 0.13$

Test for B : TLC : The principal spot in the chromatogram obtained with the test solution should be correspond to the principal spot in the chromatogram obtained with reference solution (a). The principal spot in the chromatogram obtained with the reference solution (b) should be appeared as single spot and chromatogram obtained with reference solution (c) shows two separate spots.

Test for C : The solution does not wet the sides of the tube and does not pour easily from the tube.

Test for D : No red color or yellowish green florescence is produced.

Test for E : For sodium : A dense white precipitate should be formed and For phosphate : A bright yellow precipitate should be formed.

**For Laboratory Use Only**