

# Chem-Impex International, Inc.

---

**Tel:** (630) 766-2112

**E-mail:** sales@chemimpex.com

**Shipping and Correspondence:**

935 Dillon Drive

Wood Dale, IL 60191

**Fax:** (630) 766-2218

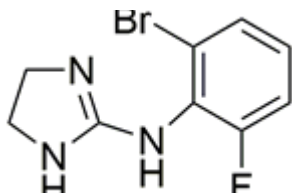
**Web site:** www.chemimpex.com

**Manufacturing site:**

825 Dillon Drive

Wood Dale, IL 60191

---



## Product Specifications

<b>Catalogue Number</b>	38227
<b>Product</b>	<b>Romifidine</b> 2-(2-Bromo-6-fluoroanilino)-2-imidazoline 2-(2-Bromo-6-fluorophenylamino)-2-imidazoline
<b>CAS Number</b>	65896-16-4
<b>Molecular Formula</b>	C <sub>9</sub> H <sub>9</sub> BrFN <sub>3</sub>
<b>Molecular Weight</b>	258.09

---

<b>Appearance</b>	White to light yellow powder to crystal
<b>Melting Point</b>	109 - 111 °C
<b>Purity by HPLC</b>	≥ 95%
<b>Storage</b>	Store at 2 - 8 °C

**For Laboratory Use Only**