

Chem-Impex International, Inc.

Tel: (630) 766-2112

E-mail: sales@chemimpex.com

Shipping and Correspondence:

935 Dillon Drive

Wood Dale, IL 60191

Fax: (630) 766-2218

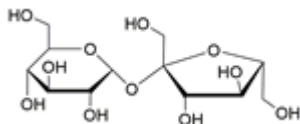
Web site: www.chemimpex.com

Manufacturing site:

825 Dillon Drive

Wood Dale, IL 60191

Product Specifications



Catalogue Number 38902

Product

Sucrose

b-D-Fructofuranosyl-a-D-glucopyranoside

a-D-Glucopyranosyl b-D-fructofuranoside

CAS Number 57-50-1

Molecular Formula C₁₂H₂₂O₁₁

Molecular Weight 342.30

Appearance Off-white crystalline powder to crystal

Appearance of Solution Clear, colorless solution

Solubility Soluble in water (at 30 g/L)
Average time to dissolve : Within 5 min

Water Content (Karl Fisher) ≤ 0.01%

Insoluble None

Purity ≥ 99.5%

Storage Store at RT

Additional Information Biological testing : Test Concentration: 30.0 g/L
Test Specification : Supports and/or facilitates plant growth and/or shoot proliferation in two or more plant tissue cultured lines with no morphological aberrations to plants.
Coreopsis : To pass test
Achimenes : To pass test

For Laboratory Use Only