

Chem-Impex International, Inc.

Tel: (630) 766-2112

E-mail: sales@chemimpex.com

Shipping and Correspondence:

935 Dillon Drive

Wood Dale, IL 60191

Fax: (630) 766-2218

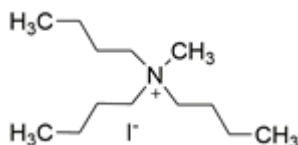
Web site: www.chemimpex.com

Manufacturing site:

825 Dillon Drive

Wood Dale, IL 60191

Product Specifications



Catalogue Number	39744
Product	Tributylmethylammonium iodide Methyltributylammonium iodide
CAS Number	3085-79-8
Molecular Formula	C ₁₃ H ₃₀ IN
Molecular Weight	327.29

Appearance	White to light yellow crystalline powder
Assay by titration	≥ 98%
Storage	Store at RT

For Laboratory Use Only