

Chem-Impex International, Inc.

Tel: (630) 766-2112

E-mail: sales@chemimpex.com

Shipping and Correspondence:

935 Dillon Drive

Wood Dale, IL 60191

Fax: (630) 766-2218

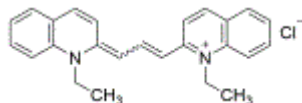
Web site: www.chemimpex.com

Manufacturing site:

825 Dillon Drive

Wood Dale, IL 60191

Product Specifications



Catalogue Number 42032

Product

Pinacyanol chloride

1,1'-Diethyl-2,2'-carbocyanine chloride

2,2'-Trimethinequinocyanine chloride

CAS Number 2768-90-3

Molecular Formula C₂₅H₂₅ClN₂

Molecular Weight 388.93

Appearance Green to olive-green crystalline powder

Solubility Opaque dark purple solution (1 mg/mL in water)

Infrared Spectrum Conforms to structure

UV Ratios UV-Visible Spectrum (0.001 g/L) : E(606nm +/- 3 nm) = 170,000

Grade Suitable for Hematology & Histology

Storage Store at RT

For Laboratory Use Only